



# THE DATASHEET OF CR-1616/F2N

CR1616

## LITHIUM MANGANESE DIOXIDE



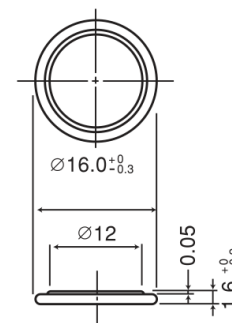
## Features &amp; Benefits

- Good pulse capability
- High discharge characteristics
- Stable voltage level during discharge
- Long-term reliability

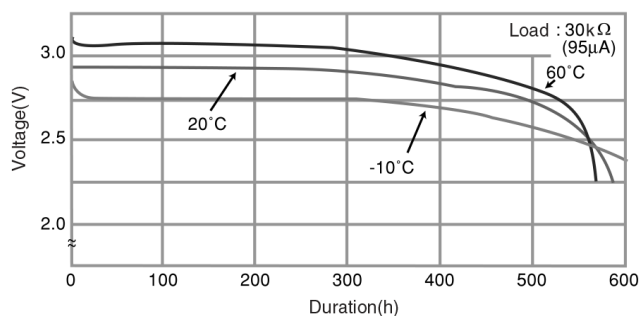
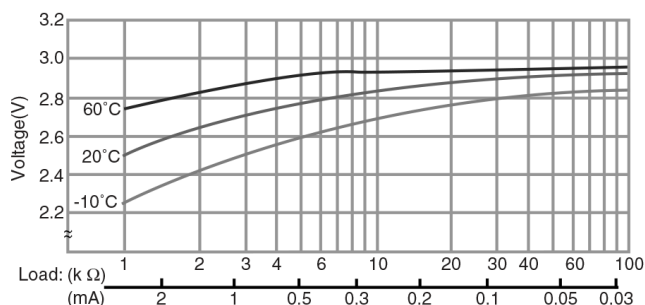
## Specifications

Nominal Capacity:	55 mAh
Nominal Voltage:	3V
Weight:	1.2g
Operating Temperature:	-30°C - +60°C

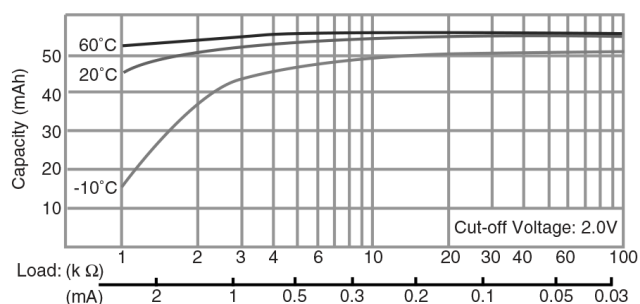
## Dimensions



## Temperature Characteristics

Operating Voltage vs. Load Resistance  
(voltage at 50% discharge depth)

## Capacity vs. Load Resistance

**⚠ WARNING**

Serious harm in as little as 2-hours if swallowed. **KEEP AWAY FROM CHILDREN.** Seek immediate medical help if swallowed. Have the doctor call the poison center at 1-(800) 498 8666 for US and Canada. International: 303-389-1300

Product manufacturers should design their products to meet the safety requirements of Annex I of UL60065 or equivalent standards.