



THE DATASHEET OF 1010

SMT & THM POLARIZED "CR2" • "CR123A" CELL HOLDERS

FEATURES

- Battery installation and removal does not require tools.
- UL 94V-0 Heat resistant Nylon Housings well suited for reflow or wave soldering.

- Securely holds battery in place
- Polarized holder offers circuit protection against improper battery installation

APPLICATIONS

- Computer memory, power backup systems
- Telecommunications/Security Systems
- PLC and industrial controls

SPECIFICATIONS

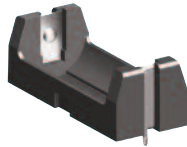
Base: High Temp Nylon 46, UL Rated 94V-0

Contacts: .012 (.30) Stainless Steel, Gold Plate (Flash) - SMT

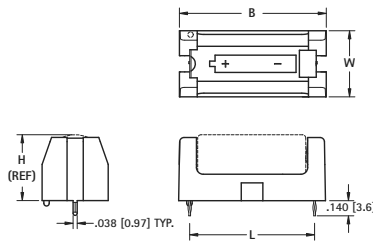
Contacts: .012 (.30) Stainless Steel, Tin-Nickel Plate - THM

Operating temp range: -60°F to 290°F (-50°C to 145°C)

THM

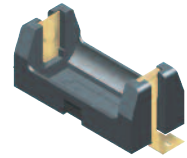


Thru-Hole Mount (THM)

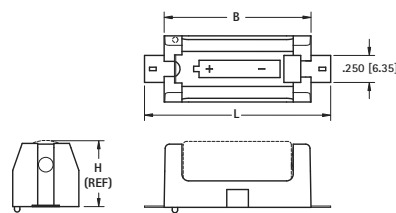


1018C
RETAINER
COVER
FITS ALL
HOLDERS

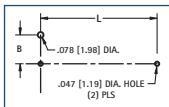
SMT



Surface Mount (SMT)

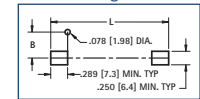


Mounting Detail



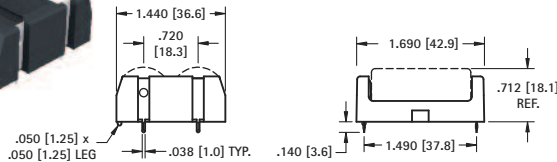
CAT. NO.	MOUNTING STYLE	L	W	H (Ref)	B	G	CELL SIZE	PACKAGING SPEC'S
1010	SMT	1.723 (43.8)	.612 (15.5)	.661 (16.8)	1.360 (34.5)	.265 (6.7)	CR2	50 pieces per tray
1011	THM	1.156 (29.4)						
1050	SMT	2.062 (52.4)						
1051	THM	1.487 (37.8)	.720 (18.3)	.712 (18.1)	1.690 (42.9)	.319 (8.1)	CR123A	

Mounting Detail

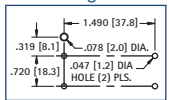


SMT & THM DUAL POLARIZED CR123A CELL HOLDER

THM

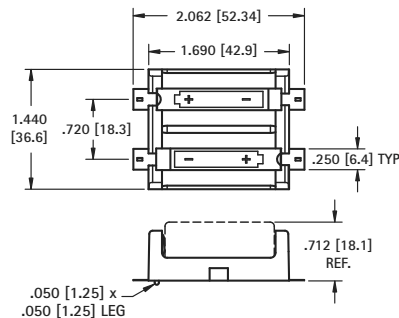
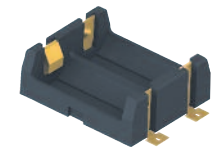


Mounting Detail

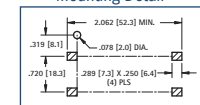


CAT. NO. 1079

SMT



Mounting Detail

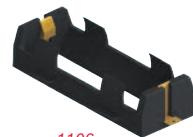


CAT. NO. 1080

Packaging Spec's: 25 pieces per tray

SMT & INLINE "26650" LITHIUM-ION HOLDERS

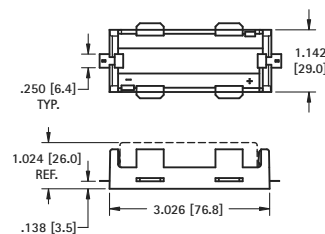
SINGLE



1106
SMT

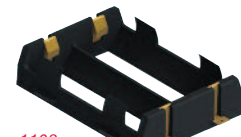


1107
Solder Lugs



DWG. 1 SMT version shown

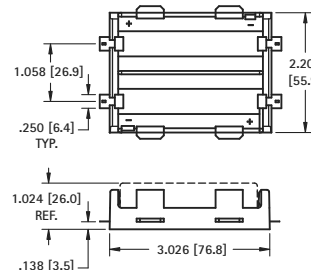
DUAL



1108
SMT

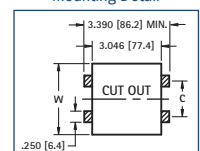


1109
Solder Lugs



DWG. 2 SMT version shown

Mounting Detail



SPECIFICATIONS

SMT Base: High Temperature Nylon 4/6, UL Rated 94V-0

SMT Contacts: .012 (.03) Stainless Steel, Gold Plate (Flash)

Inline Base: PBT, UL Rated 94V-0

Inline Solder Lugs: .012 (.3) Stainless Steel, Nickel Plate

CAT. NO.	MTG.	FIG. NO.	HOLDS NO. OF CELLS	SMT MOUNTING PAD LAYOUT	
				W	C
1107	Solder Lugs	1	1	-	-
1109		2	2	-	-
1106	SMT	1	1	1.142 (29.0)	On Center
1108		2	2	2.200 (55.9)	1.058 (26.9)